



# FIRESTOP CENTRE

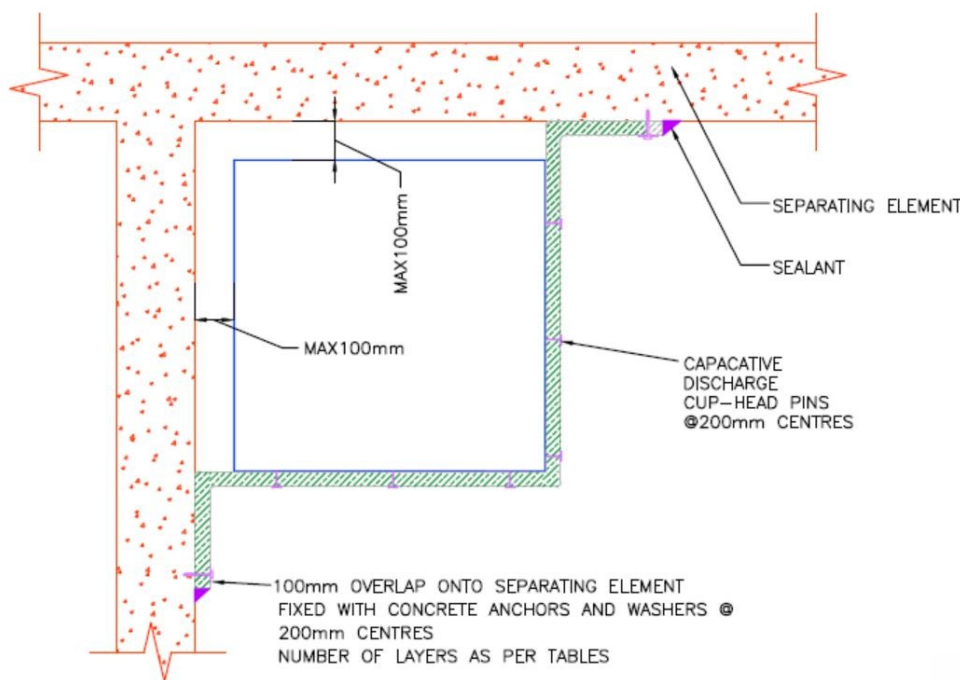
Authorised New Zealand Distributor  
Ph (09) 483 4000 www.firestopcentre.co.nz

## FIRESTOP Duct Wrap-38 Uninterrupted Rectangular Duct 2-Sided Application Internal or External Fire

Note: Not to be used for fire barrier penetrations

### INSTALLATION INSTRUCTIONS

1. This system may be used for wrapping uninterrupted rectangular ducts that do not penetrate fire barriers where the construction is such that the FIRESTOP Duct Wrap-38 cannot be applied to all sides of the duct because the duct is less than 100mm from a concrete wall/floor/ceiling.
2. For penetrations through fire-rated walls or floors, the appropriate penetration system must still be used. For that reason it may be expedient to construct the penetration first while access is still available and attach the duct run afterwards.
3. Wrap the duct in one or two layers of FIRESTOP Duct Wrap-38 as determined by the Fire Classification panel to the right of this page. All wrap joints must be one of those shown in System ID# FC808. There must be 100mm overlap onto the wall or floor.
4. Fix the overlap section to the wall or floor using concrete anchors and 25mm OD washers at 200mm centres.
5. Fix the FIRESTOP Duct Wrap-38 to the duct with FIRESTOP Weld Pins at nominal 200mm centres (+/-50mm) along and around the duct and midway around each overlapping joint.
6. Seal the wrap/concrete junction with a cone of FIRESTOP Ultra or Protecta FR Acrylic sealant.



# FireTS Lab

Report AR23108, Pages 41 - 42  
AS1530.4-2014 AS4072.1-2005

System ID# FC872

<b>Products</b>	FIRESTOP Duct Wrap-38
<b>Application</b>	Fire stopping of uninterrupted ducts
<b>Construction</b>	Rectangular ducts located closer than 100mm to a rigid fire-rated wall or floor corner.

### Fire Classification

NOTE: For general instructions on installing FIRESTOP Duct Wrap-38 see [Installation Instructions](#) sheet on Firestop Centre website.

### Duct Size

Any rectangular duct up to 1800mm x 1000mm (or equivalent area).

### Internal Fire, Vertical or Horizontal

Single layer wrap FRR 120/120/120

### External Fire, Vertical or Horizontal

Single layer wrap FRR 60/60/30  
Double layer wrap FRR 120/120/120

As a part of our policy of on-going product development and testing, we reserve the right to modify, alter or change product specifications without giving notice. All information contained in this document is given in good faith and is provided for guidance only. Any drawings provided are for illustrative purposes only. As Firestop Centre has no control over the methods or competence of installation and of prevailing site conditions, no warranties, expressed or implied are intended to be given as to the actual performance of the product mentioned or referred to herein and no liability whatsoever will be accepted for any loss, damage or injury arising from the use of the information given.

For all technical details on the products specified please refer to the technical data sheets that can be found on [www.firestopcentre.co.nz](http://www.firestopcentre.co.nz)

Signed and approved:



# FIRESTOP

Firestop Centre Ltd  
657 Great South Road  
Penrose, AUCKLAND

Sheet size: **A4**  
Drawn date & no: 20/5/24